

We are proud to acknowledge and support participation of Traditional Owners of the land on which we live and work, specifically the Gunaikurnai, Bunurong and Boonwurrung.

We honour and respect their ongoing cultural and spiritual connection to this country and pay our respects to Elders of the past, present and future.

# Enhancing your farm dam plan



Australian Government  
Department of Agriculture,  
Fisheries and Forestry



Future  
Drought  
Fund



*Vic Hub*  
**DROUGHT &  
INNOVATION**



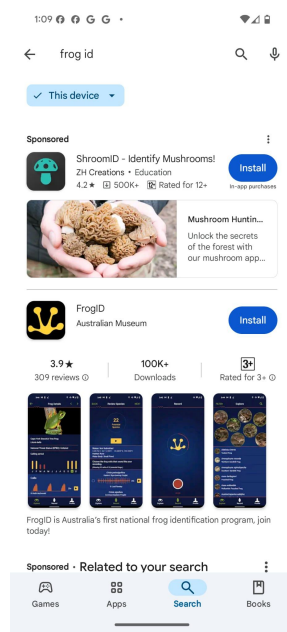
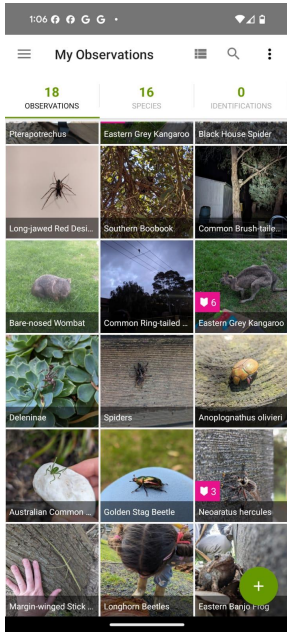
**Food & Fibre  
Gippsland**



# Practicalities

- Monitoring
- Dam Structure/Safety
- Fencing/Grazing Management
- Earthworks
- Weed/pest control
- Revegetation

# Monitoring



- Apps
- Cameras
- Water testing
- Stock/Farm health

# Safety

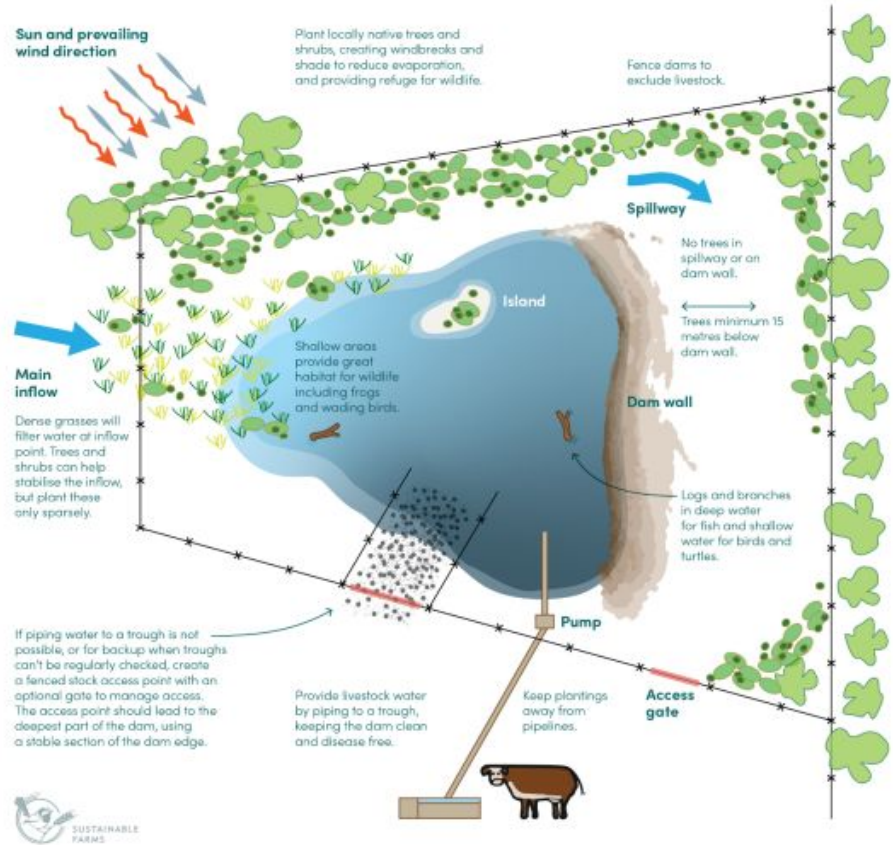
Dam owners are responsible for the safety of their dams. They are required to implement certain controls, such as safety management programs, monitoring and operational measures.

Consider getting advice from a dam engineer if you plan structural changes

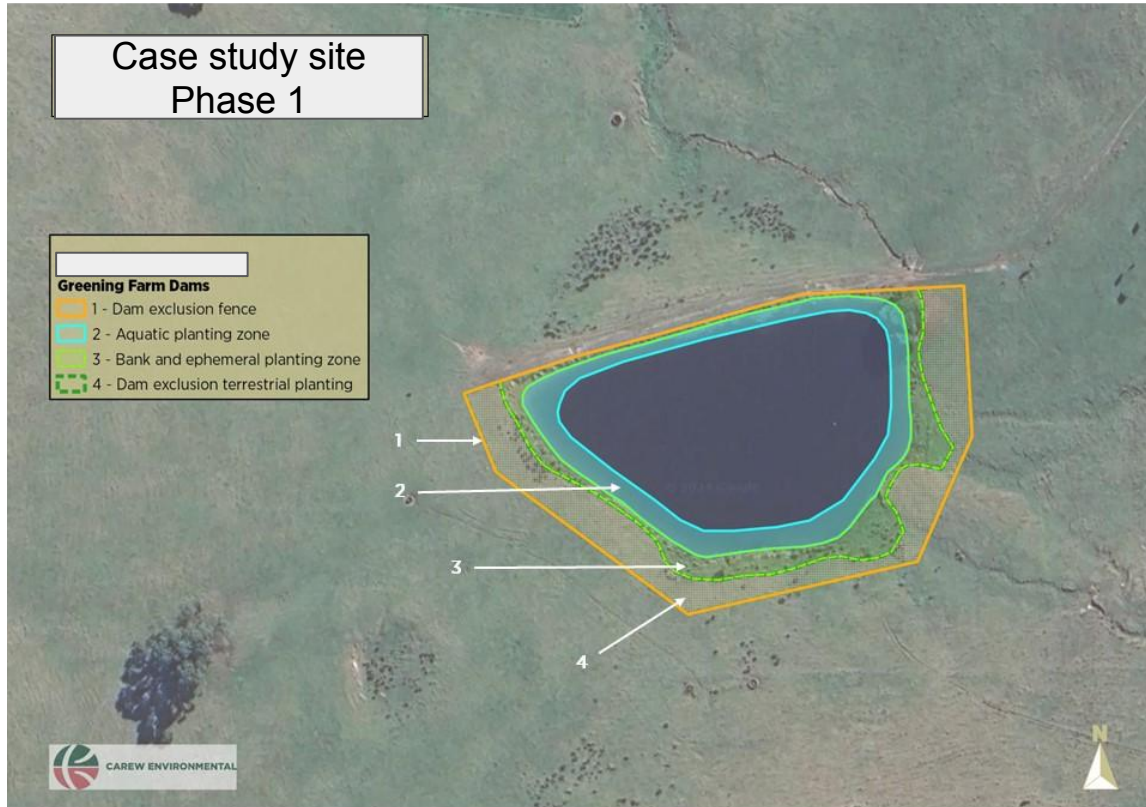
# Select and sketch your dam (in its current condition)

Consider when selecting

- Dam size and depth
- Dam position, e.g topography, position in relation to other vegetation
- Problems



# Draw in your fence and planting zones



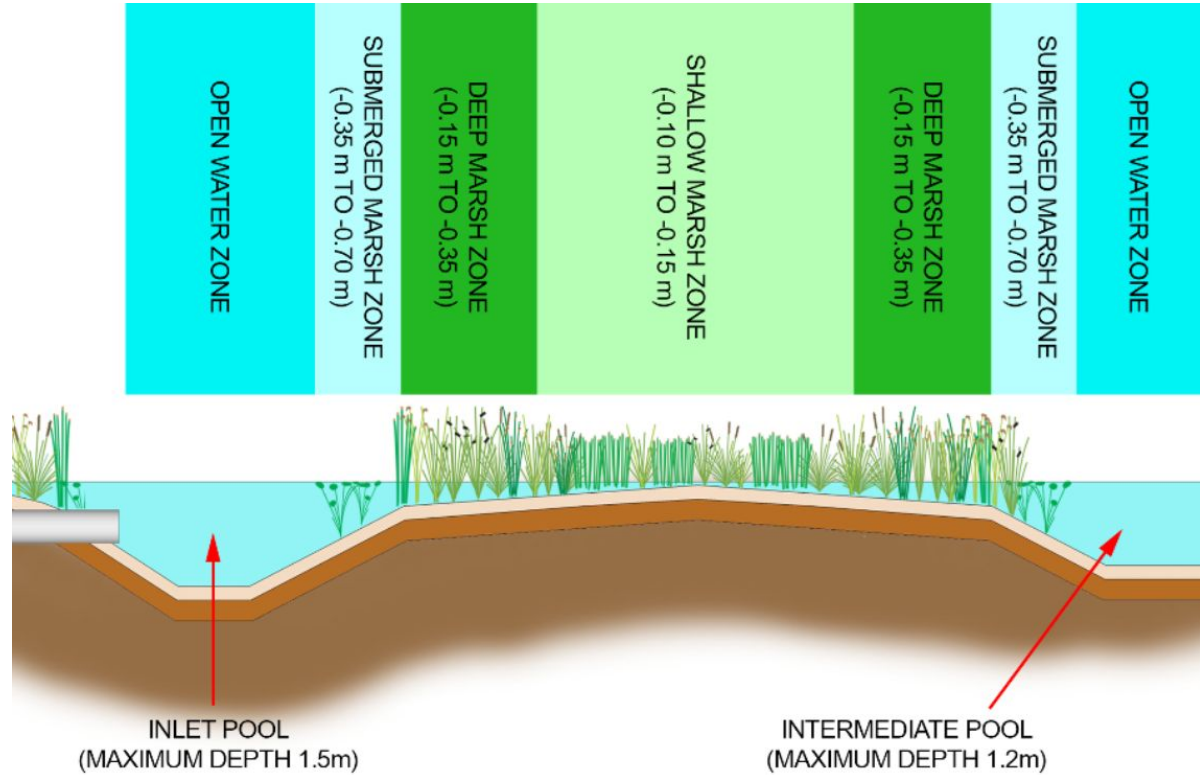
Highlight different zones inside the exclusion fencing considering:

- Inflow and outflow zones
- Aquatic zone, shallow edges and seasonal waterlogging
- Maintenance and emergency access

# Earth works

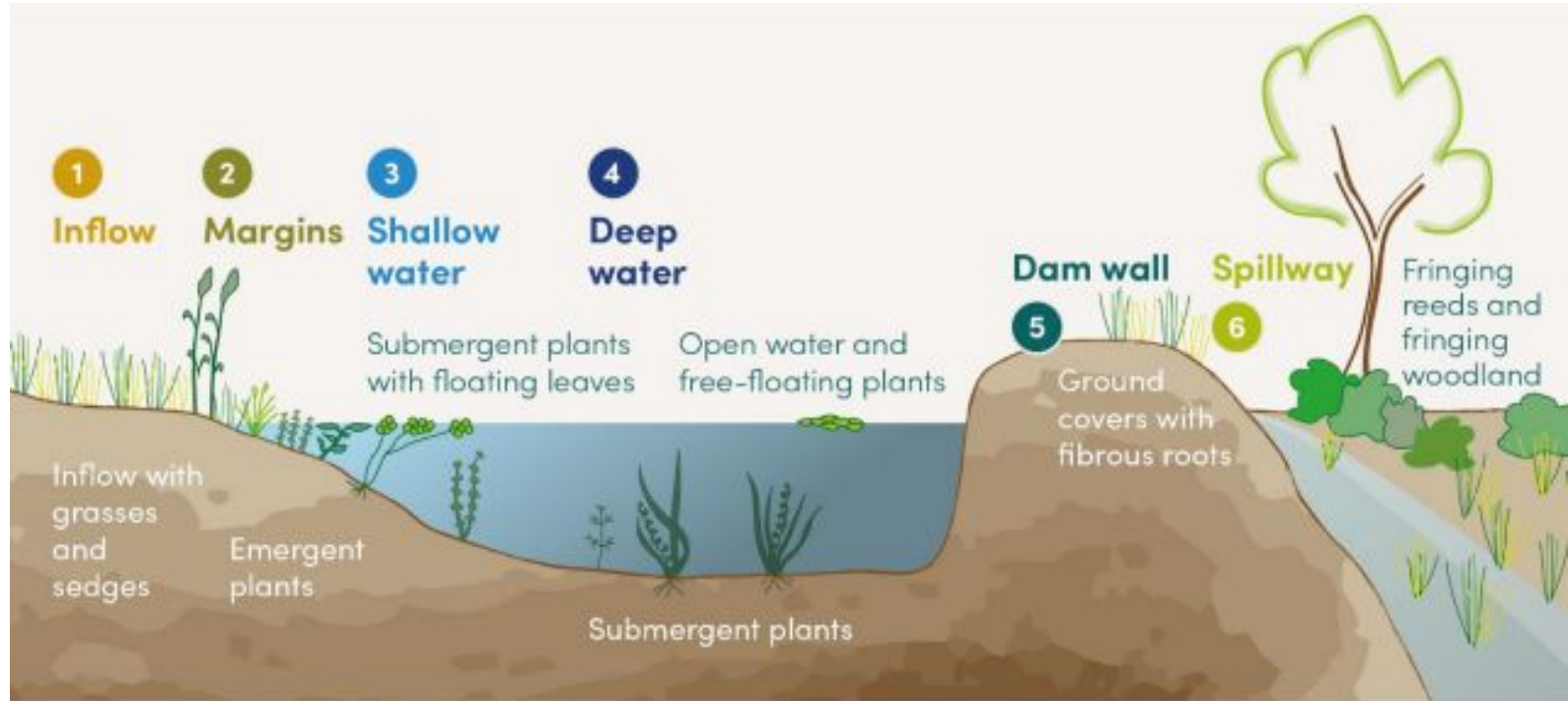
## Considerations

- Safety
- Responsibilities
- Adding topsoil
- Moving earth to create larger zones
- Adding an island





# Planting Zones



# Fencing/stock access

## Considerations

- Minimum 10m from water
- Gates
- Hardened access point or water piped to troughs
- Future plans- connections to other plantings?

# Create a plant list and order plants

## Considerations

- Planting density
- EVCs
- Remnant trees
- Can you grow from seed or propagate?

# Start planning

<b>Action</b>	<b>When</b>	<b>Who</b>
Check for available grants		
Fencing/Stock removal	Prior to planting	contractor
Monitoring	Now and once per season	Me. Set up camera? Record
Adding soil		
Order plants	9 months prior	
Weed control	6 weekends prior to planting	
Plan a planting day		With landcare?

# Does your plan have a phase 2 or 3?



Plan for future works considering:

- Future farm operations especially access for stock and machinery
- Water supply
- Protecting sensitive areas; waterways, seasonally wet soils, remnant vegetation
- Financial capacity

# Resources

<https://ancold.org.au/product-category/guidelines/>

<https://www.water.vic.gov.au/water-sources/victorias-dams/dam-safety-regulation>

[https://www.waternsw.com.au/\\_data/assets/pdf\\_file/0008/113687/FarmDamFinalLR.pdf](https://www.waternsw.com.au/_data/assets/pdf_file/0008/113687/FarmDamFinalLR.pdf)

<https://letstalk.melbournewater.com.au/ag-resilience>

<https://wsbn.org.au/plants/>

<https://agriculture.vic.gov.au/farm-management/water/managing-dams>

[https://www.sgln.net.au/wp-content/uploads/2017/03/plant\\_species\\_guide.pdf](https://www.sgln.net.au/wp-content/uploads/2017/03/plant_species_guide.pdf)